



# GAT MONTHLY MEMBERSHIP PROGRESS REPORT

Results as of: 2/28/2022

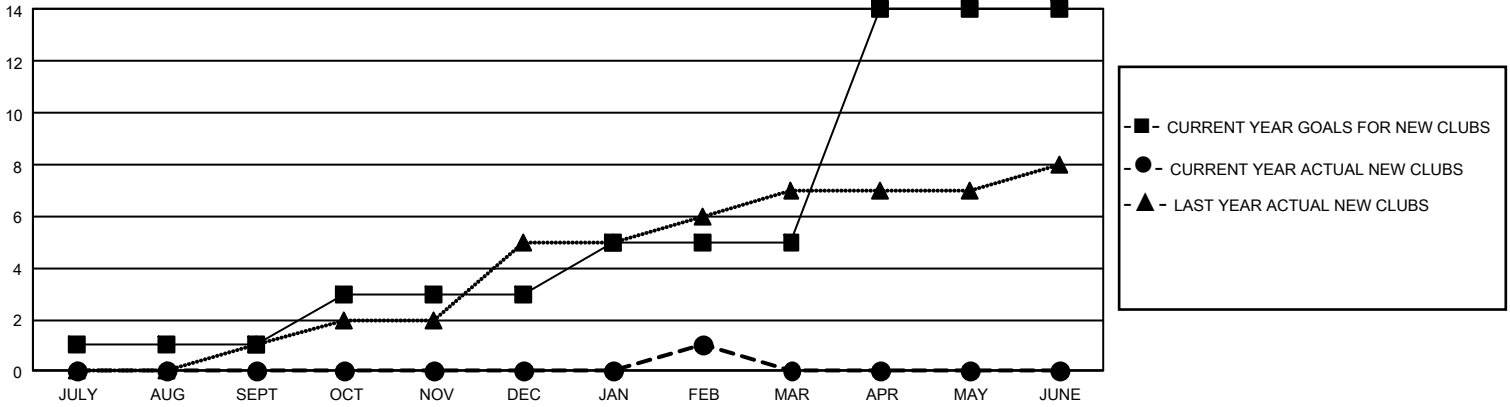
## GMT Constitutional Area 1, Group H

REPORT DOES NOT INCLUDE CLUBS IN UNDISTRICTED AREAS.

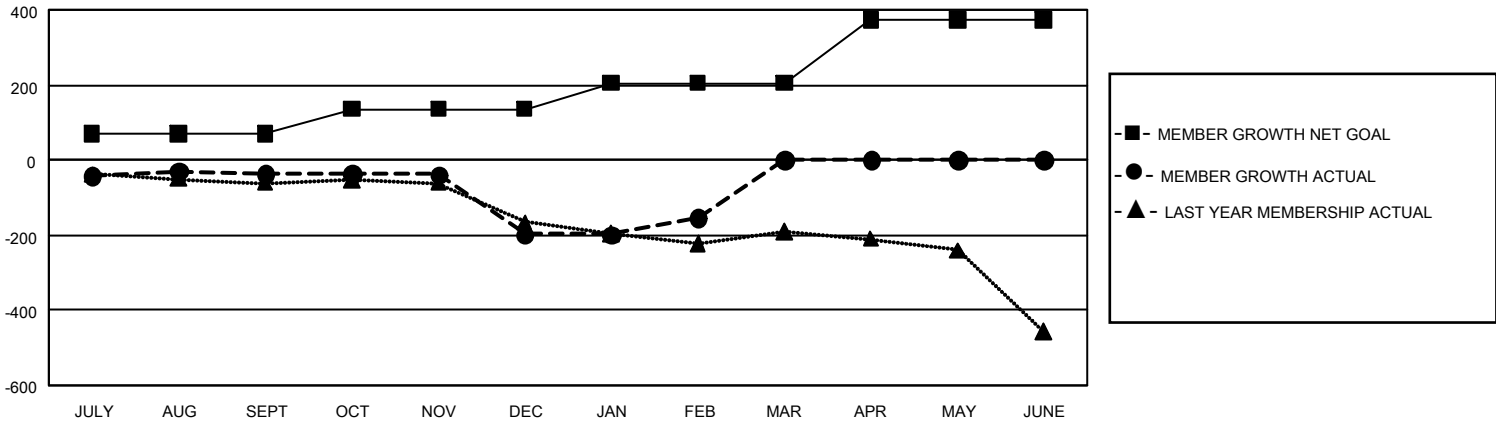
Clubs			
RESULTS FOR 2021-2022			
QUARTER	NEW CLUB GOAL	NEW CLUBS	DROPPED CLUBS
JULY/AUG/SEPT	3	0	2
OCT/NOV/DEC	6	0	3
JAN/FEB/MAR	6	1	2
APR/MAY/JUNE	27	0	0

Members			
RESULTS FOR 2021-2022			
QUARTER	MEMBER GROWTH NET GOAL	MEMBER GROWTH ACTUAL	DROPPED MEMBERS ACTUAL (including transfers)
JULY/AUG/SEPT	71	244	235
OCT/NOV/DEC	65	222	345
JAN/FEB/MAR	69	180	111
APR/MAY/JUNE	169	0	0

GOALS AND ACTUAL NEW CLUBS CUMULATIVE



GOALS AND ACTUAL MEMBERS CUMULATIVE



<b>DROPPED CLUBS: 7</b>  <b>DROPPED MEMBERS</b> DECEASED 97 CLUB CANCELLED 41 OTHER 553 <b>TOTAL 691</b>	151 CLUBS OF 309 ADDED 1 OR MORE NEW MEMBERS	<b>GENDER DISTRIBUTION</b> MALE 3,807 (58.02%) FEMALE 2,754 (41.98%) NON BINARY 0 (0.00%) PREFER NOT TO ANSWER 0 (0.00%)
	<a href="#">CLICK HERE FOR CUMULATIVE MEMBERSHIP DATA</a>	TOTAL FAMILY UNIT MEMBERS 1,605 FAMILY MEMBERS PAYING HALF DUES 836